



Secure Access, Anytime!



The Authenex Strong Authentication System (ASAS®) is the most advanced, cost-effective network security system with two-factor authentication for LAN, remote VPN and web access. Consisting of the ASAS Server and a chip-based token called A-Key®, ASAS provides PKI, Challenge-Response or One-Time Password authentication to your users, wherever they are. Because the A-Key is secure, even if it is lost or stolen, it is unusable to anyone but its owner and administrator.

FOR MORE INFORMATION
www.authenex.com
or call 1.877.AUTHENEX

3-Way Protection - One Token

One-Time Password, PKI Certificates or Challenge-Response Authentication – all available on the same key.

Quick and Easy Installation

ASAS is fully compatible with existing IT infrastructure, VPN and Firewall, via RADIUS and TCP/IP. Installation usually takes less than 30 minutes.

Total Protection from Anywhere

One-Time Password authentication allows network access without additional client software, enabling secure access even from an airport paid terminal.

Mobile Identity

My A-Key™ stores user credentials which can be utilized with applications, such as Single-Sign On. For PKI applications, the ACert function stores digital certificates and signatures on the A-Key.

Anywhere, Anytime Management

Use a Web browser to manage ASAS – locally or via the Internet – through the Web Management Console (WMC).

Cost Effective Solution

An all-in-one solution utilizing Authenex proprietary technology makes ASAS very affordable and ensures a quick return on investment.



ASAS server:

- Operating system:
 - Windows Server 2003 SE
 - Windows Server 2000 SP3 or higher
- CPU: Pentium IV 1.4GHz or above
- 8GB of free hard disk space
- 512 MB of Memory
- 1 Ethernet port; 1 USB port
- Compatible VPN vendors:
 - SSL VPN with F5 Networks and Neoteris
 - Cisco PIX and 3000 series VPN
 - Check Point FW-1 / VPN-1
 - Nortel Mobility
 - Juniper VPN
 - RADIUS-capable VPN (RFC2865)
- Web access authentication
 - MS Outlook Web Access (OWA)
 - MS Internet Information Services (IIS)
 - Citrix metaframe presentation server
- Database support:
 - MS SQL Server 2000 and above
 - MS Active Directory

A-Key:

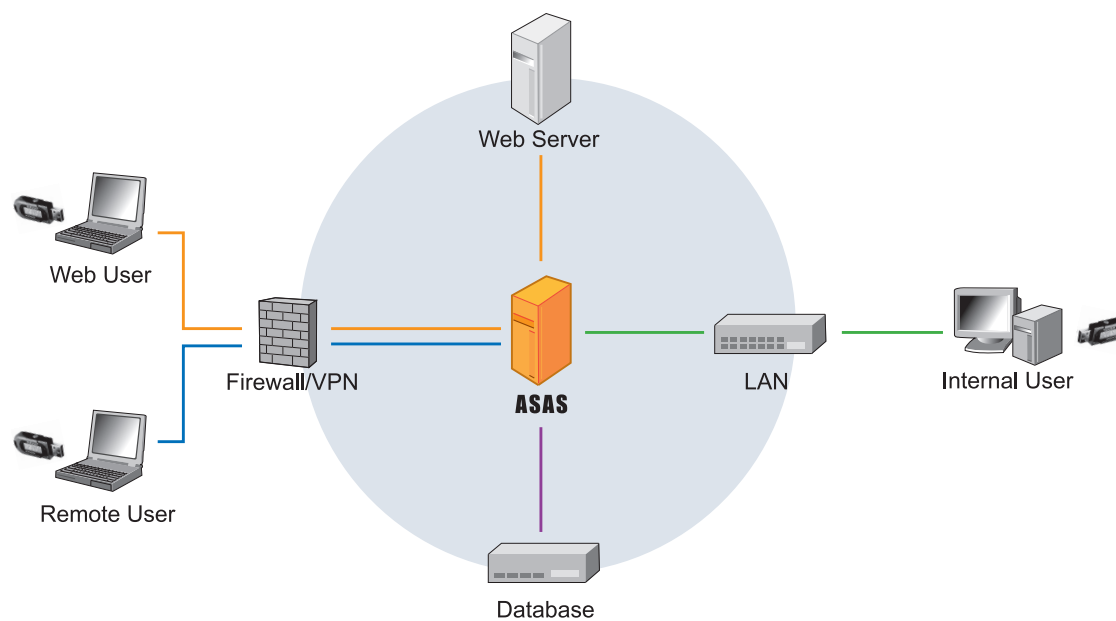
- Connector: USB 1.1
- Operating Temperature: -10 to 60° C
- Operating system:
 - Windows XP Home and Professional
 - Windows 2000 Professional and Server
 - Windows 2003 Server
 - (English, Chinese and Japanese)
 - Clientless for OTP

Encryption algorithms:

- Symmetric Key Cryptography:
 - AES 128-bit
 - DES, 3xDES, DES-X, MD5, RC2
- Secure Hashing Algorithms: SHA-1

FOR MORE INFORMATION

www.authenex.com
or call 1.877.AUTHENEX



© 2005 Authenex, Inc. 1489 Salmon Way, Hayward, CA 94544 USA

Authenex®

All rights reserved. Authenex, A-Key, ASAS, ACert, My A-Key and associated logos are registered or unregistered trademarks of Authenex, Inc. All other registered or unregistered trademarks are the property of their respective owners.

*QD010606-01